

Nursing Consultation Services, Ltd.
LifeTrak, Ltd.

Spring 2000 Newsletter

President's Greeting

As I look back on the past year, we have been privileged to continue to be advocates for individuals and their families experiencing a disability or chronic illness through our two private nursing consulting practices. You will notice our address is different, but in actuality, we have not moved, just the township reassigning mailing addresses. If you prefer fast

mail to snail mail, send us a note on E-mail at NcsLtd@aol.com. In our effort to be as responsive as possible to your needs, we are enclosing surveys of our performance with each final report, care plan, or annual life care coordination report. Please take a few minutes to use the quick checklist and return to us. In this manner, we are able to address your questions, concerns, and

hopefully improve our services to all of you. Our main focus is, and will continue to be, facilitating the best quality of life for an individual experiencing a disability or chronic care condition, and their family. Your suggestions provide us with the framework to redesign our services and maximize our effectiveness as rehabilitation nurses.

Terri Patterson, RN, MSN, CRRN

CARF: Commission for Accreditation of Rehabilitation Facilities

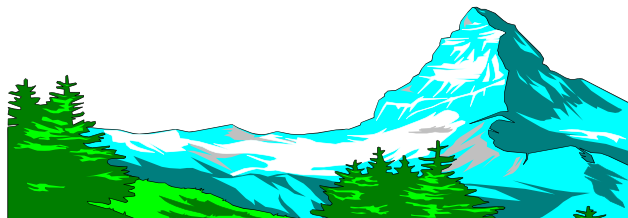
We are now in our second year of accreditation from CARF, Commission for Accreditation of Rehabilitation Facilities, and therefore are continuing to implement the standards of the organization, and prepare for re-accreditation in 2002. Our current accreditation is for Community Support Services: Community Support Case Management/Service Coordination. The standards of CARF encompass our philosophy & consulting practice, as we advocate, facilitate, and promote appropriate services for children and adults in all areas of rehabilitation such as education, medical care, therapy services, counseling, safe home environments and community access. We are dedicated to excellence in rehabilitation nursing. We feel being recognized for accreditation by CARF is essential; especially since we were the first nursing practice in the country to achieve this status.

Professional Highlights

Terri Patterson RN, MSN, CRRN received the 1999 Medallion Award from Villanova University College of Nursing for Outstanding Service to the College of Nursing and Profession. A beautiful celebration mass was held in April at St. Thomas of Villanova Church, where Ms. Patterson was honored along with four other College of Nursing alumni from around the country receiving Medallions. Kate Murphy RN, MSN, CRRN has been very active in the Association of Rehabilitation Nurses (ARN), serving as Membership Chairman this past year. Our newest rehabilitation nurse, Jody Masterson, has passed her certification exam in rehabilitation nursing, and now is known officially as Jody Masterson, RN, MSN, CRRN. Ms. Patterson and

Ms. Murphy attended the annual brain injury conference in Virginia in the Spring; and Ms. Patterson, Ms. Murphy and Ms. Masterson attended the annual Association of Rehabilitation Nurses conference in the Fall in Minnesota.

Nursing Consultation Services, Ltd.



Outcome Measurement Summary

In an ongoing commitment to improve our services to those with disabilities and their families, we have implemented an outcome measurement system. Many of you may have completed our surveys, and those suggestions from you, as well as our continued assessment of rehabilitation practice standards, have led to an annual review of outcomes. These outcomes encompass our mission, strategic plan,

standards, nursing practice, rehabilitation services, client advocacy, accessibility for care, client and family rights, professional development, leadership and practice administration. Our outcome study for NCS results were 100% in five major areas and 94% in the other area. The efficiency measures related to usefulness, timeliness and preparation of report; identification of rehabilitation care needs and availability of

resources for care were all designated as achieved. In LifeTrak, the measurements were all 100% in the areas of improved quality of life for the individual with a disability; communication; responsiveness and participation of the life care coordinator with the family; and quality of the families involvement in the home care program. Thanks to all of you who responded to our surveys.

Get to Know Us

Our professional nurses and administrative support staff have had an interesting past year as well. Three of our employees will reach landmarks in their years of employment at NCS. Vicki Rioboli, accounting department, will be with us ten years this Spring. Patti Stem, administrative assistant, just had her five year anniversary with us. And, Kate Murphy, rehabilitation nurse, will be with us five years this summer. Many of you will remember Peggy Reddy Daly. She retired from NCS in January 1999, now spending time with her very large family, and at one of her favorite places, the Jersey shore.

LifeTrak, Ltd.



Revving Up For Research

We have decided to formally design, implement and publish a rehabilitation research project directed toward community services for individuals with disabilities. The specific research project has begun by retaining a nurse researcher, Vanessa Zimmerman, RN, MSN, and a computer programmer to assist us in formulating the data base, gathering the research, and developing the presentation of our results. As we have prepared hundreds of Life Care Plans for a multitude of disabilities and chronic illnesses, we would like to share this information with the rehabilitation professional community, and hopefully make recommendations to improve all services we offer to individuals with disabilities and their families.

Just A Reminder

We have not moved. The township changed our address:

Nursing Consultation Services, Ltd./LifeTrak, Ltd.
1000 Germantown Pike, D-1
Plymouth Meeting, PA 19462

(NCS)610-279-1122 • (LT)610-279-1134 • Fax 610-279-1136 • NCSLtd@aol.com